

# DALI SLAVE RELAY DEMO KIT

This document has the main info about the use of the Dali slave and its demo board. It allows by a connection to a Dali bus to drive a power device.

With the software *DaliChipSW* and the kit Bridge Demo it's able to drive one or two relay.

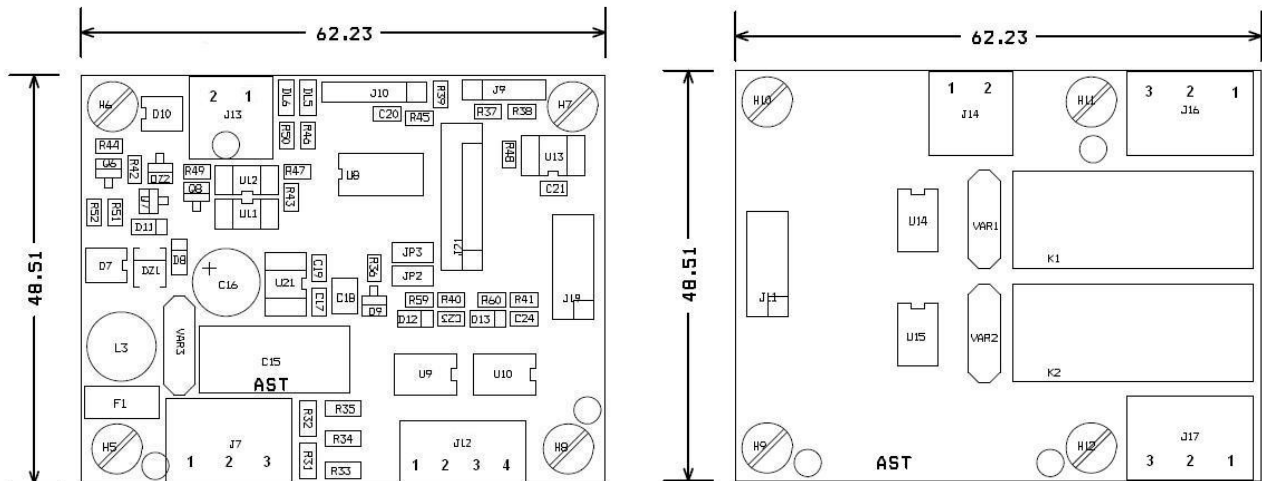
We suppose that the user has based knowledge on the Dali systems. Description and working of Dali bus isn't matter of this manual.

## Demo kit contents

- N.1 board Slave Dali
- N.1 board relay
- N.1 flat cable connection between the two board

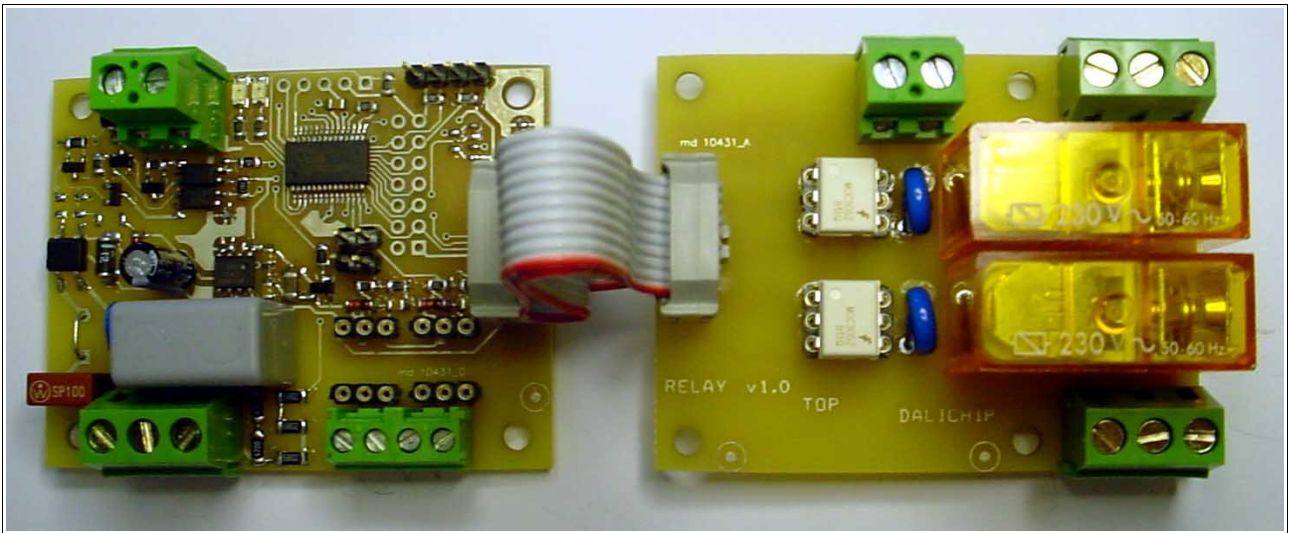
## Layout

- J7 and J14 power (220 Vac)
- J16 and J17 Relay contact output
- J13 Dali bus



## Connections

- Connect with a twisted pair cable the connector J13 to the Dali network
- Remove JP2 and JP3 from Slave Demo board
- Connect the two board with the flat cable (J11 to J19), pay attention to the correct pin number
- Connect the power load in the connector J16 and J17
- Connect the power supply to J7 and J14 and switch on



Next pages have the electric scheme of the demo kit:

